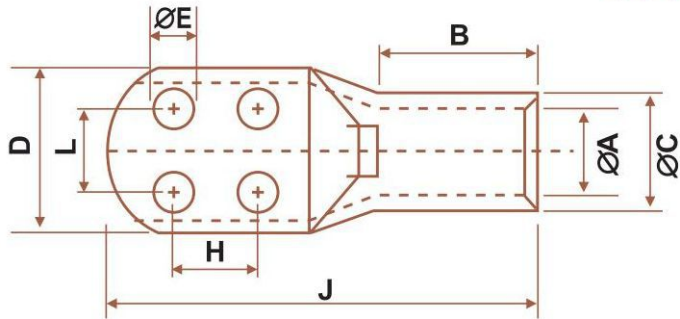


CRIMPING TYPE TINNED COPPER TRANSFORMER TERMINAL ENDS



MATERIAL : ELECTROLYTIC COPPER FINISH : ELECTRO TINNED

MM ²	ØE	ØA	ØC	D	B	L	H	J	CAT NO	
500	8.5	30	39	56	48	30	25	124	KK-500	4-M8
500	10.5	30	39	56	48	30	25	124	KK-500	4-M10
630	8.5	35	45	65	56	34	35	144	KK-630	4-M8
630	10.5	35	45	65	56	34	35	144	KK-630	4-M10